

PRODUCT UPDATE & GUIDE

Category: 5/8" & 3/4" Multi-Jet

Type: Enhanced Performance Chambers

Issue: How to Identify & Replace





CHAMBER UPDATE

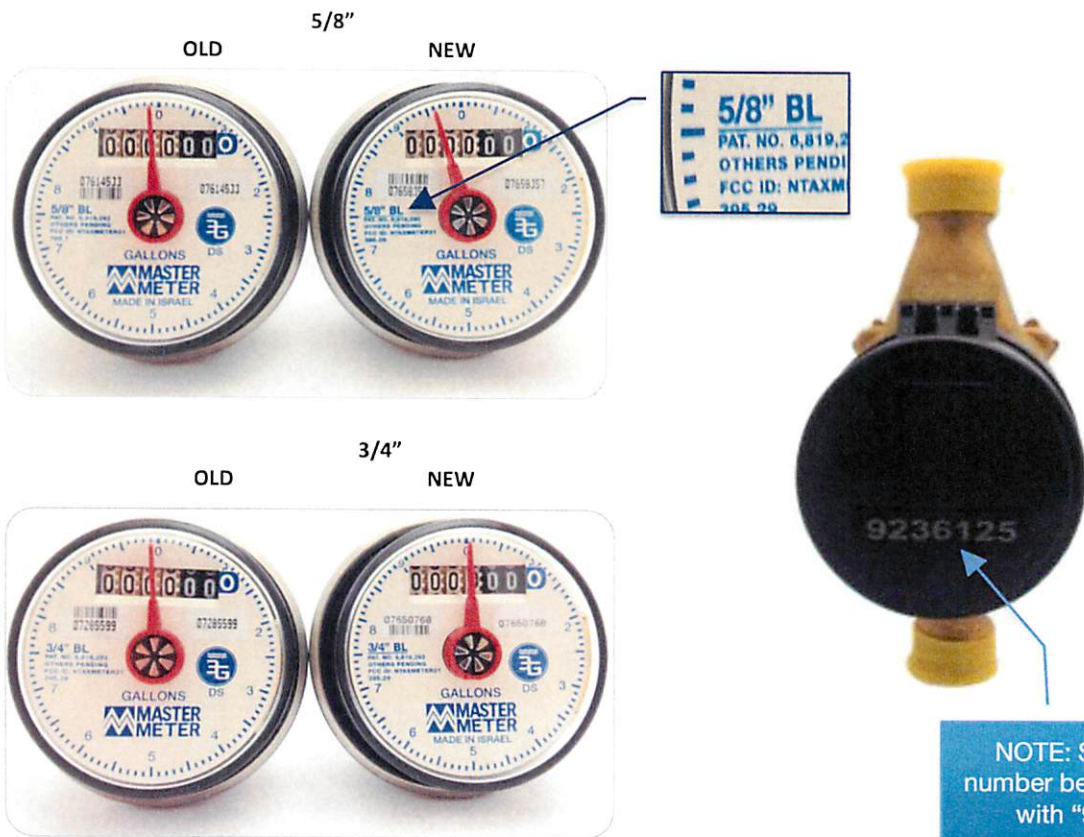
It is Master Meter's continued mission to enhance product performance when cost effective and appropriate. We are pleased to announce on April 9, 2012, Master Meter began producing and shipping 5/8" & 3/4" BLMJ meters with improved measuring chambers for enhanced performance.

Subtle design changes have allowed us to improve overall accuracy, reduce head loss and increase the meters resistance to the effects of quick opening valves that could potentially cause magnetic separation at flow rates beyond the meter's rated capacity.

Furthermore, it has become clear that any new water meter designs should consider the requirements of meeting National Fire Protection Association Standard NFPA 13D for single family, duplexes and manufactured residences. This consideration was an important factor in guiding our improved chamber design efforts.

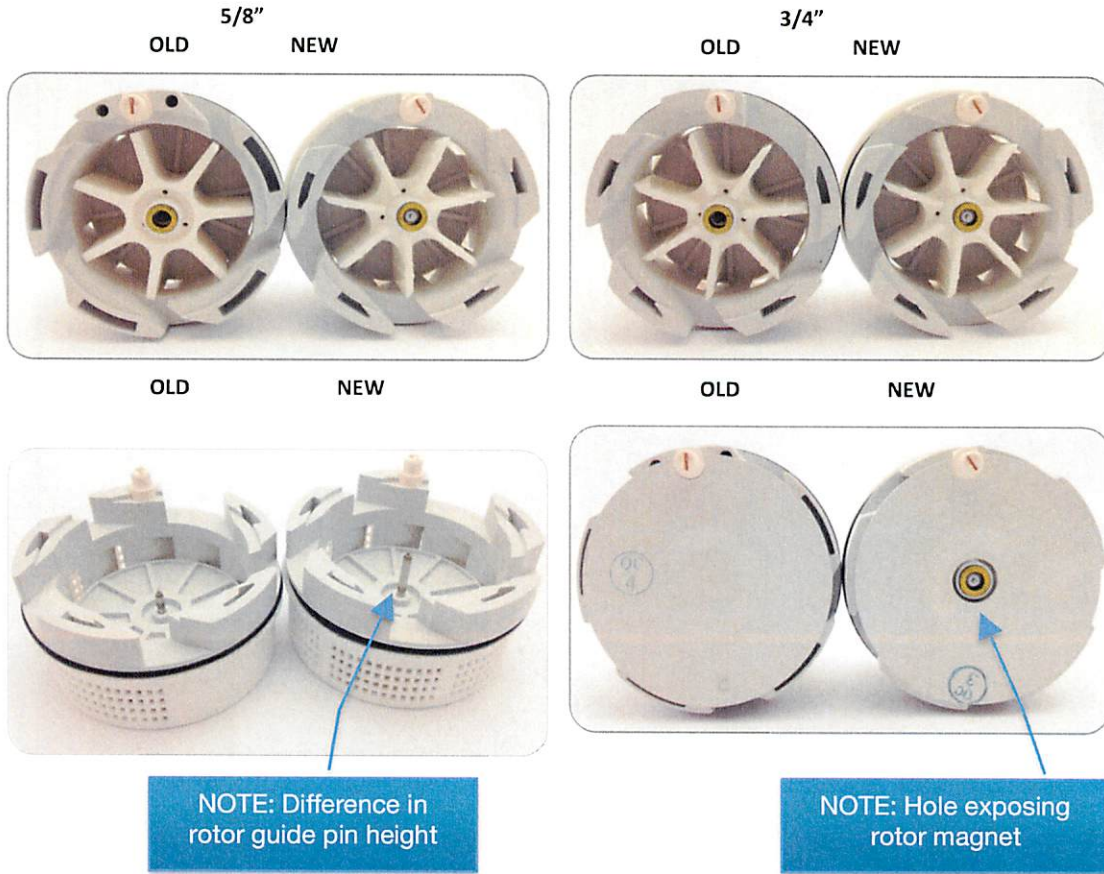
IDENTIFYING NEW IMPROVED CHAMBERS

It is easy to identify meters with the improved measuring chambers by a blue line printed beneath the meter size located on the meter's register face (see close up). Additionally, these meters can also be identified by serial numbers beginning with "92".





Upon disassembly, the improved measuring chamber can be identified by the following changes: 1. The newly designed rotor. 2. Extended rotor guide pin. 3. A molded hole in the measuring chambers upper plate allowing the magnet to be viewed when the measuring chamber is fully assembled.



Depending on size and gear ratios the magnet positioning has changed. To ensure accurate measurement and performance, it is imperative that correct parts are ordered and installed for meter upgrades and/or repairs. Providing serial number(s) of the meter(s) to be upgraded or repaired will ensure receipt of the correct register or measuring chamber.

MOVING FORWARD

All distributor and utility personnel involved in parts orders for repair or upgrade of 5/8" and 3/4" BLMJ Master Meter water meters should become familiar with these changes. Meters with the improved measuring chambers are identified in Master Meter part numbers as XXXX-XXX-XXX-5 (instead of 2) or XXXX-XXX-XXX-6 (instead of 3).

